



# PEGAS

---

## CraftPad Light

OPERATION MANUAL

[www.beerinnovations.com](http://www.beerinnovations.com)

## 1. Precautions (safety measures)

In order to avoid personal injuries and damaging the equipment, please carefully review following safety measures before starting to work with the PEGAS CraftPad Light .

- **Do not set the device pressure higher than 0.4 MPa (4 bar).**
- **Ensure that Pegas CraftPad is properly cleaned and sanitized after every use.**

Proper washing, rinsing and sanitation of your device on a regular basis will greatly reduce cross contamination, lower your maintenance costs, and will guarantee undisrupted operation

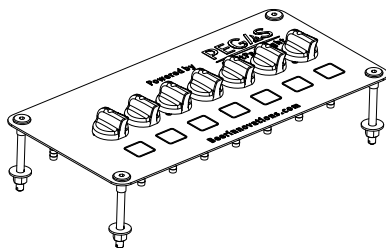
**Remember!** Compliance with the PEGAS CraftPad operation rules and safety procedures will guaranty undisrupted and safe device operation.

## 2. Device purpose

Pegas CraffPad Light – is a flow control switch manifold, for six different beers that are being dispensed through PEGAS CraftTap or another dispensing device.

PEGAS CraftPad manifold has 7 flow control switches:

- Six of them are for beer dispensing
- Seventh is for beer filling line purge with CO<sub>2</sub>



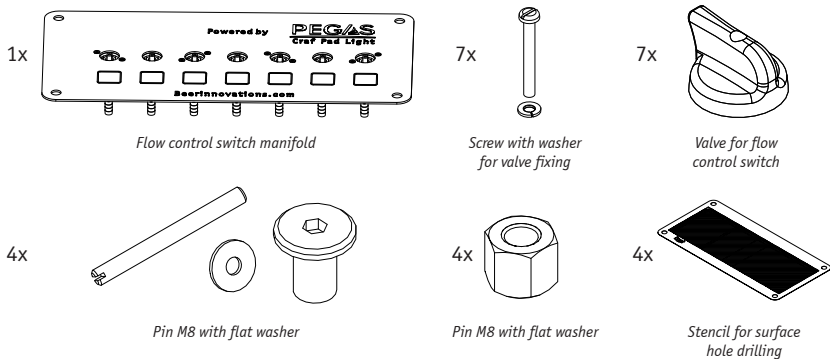
## 3. Technical data

The flow switch device CraftPad Light is made of brass, ABS plastic, stainless steel.

Parameter	Units	Значение	
Filling capacity (depends on the temperature, beer qualities, and operator qualification)	L/h (gal/h)	45-120 (10.22 – 27.24)	
CO2 pressure supplied to the keg	MPa (bar)	0.15 – 0.25 (1.5 – 2.5)	
CO2 flow rate (to create counter-pressure)	Kg/h (lb/h)	0.2 – 0.8 (0.44 – 1.76)	
Outside supply hose diameter	mm (in)	12 (1/2)	
Inside supply hose diameter	mm (in)	7 (5/16)	
Device weight	Net	kg (lb)	2.9 (6.39)
	Gross	kg (lb)	3.05 (6.72)

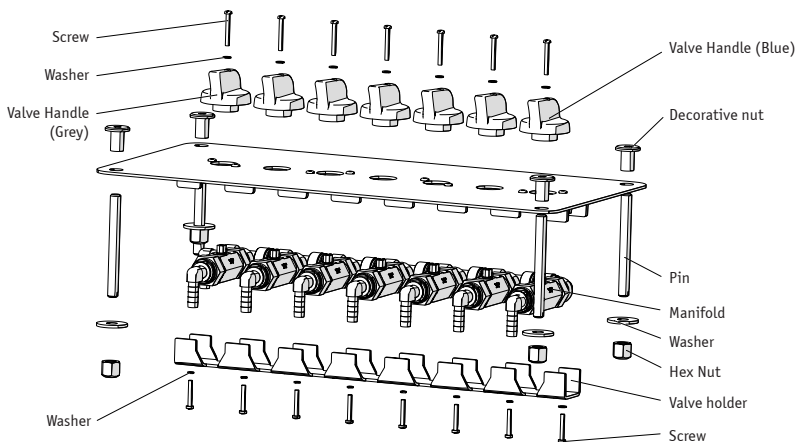
*\*Device appearance, its design, technical data and consumer characteristics may be changed without notice*

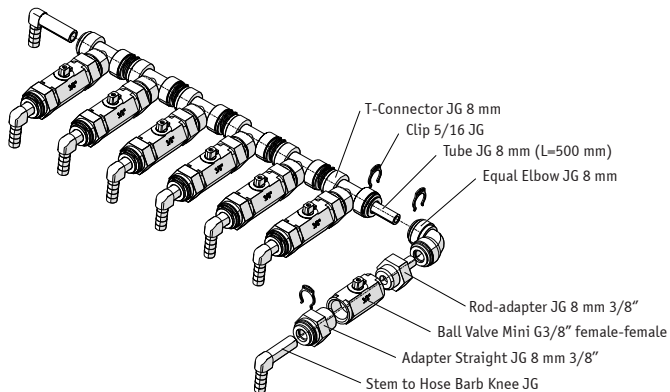
## 4. Packaging contents



## 5. Assembly

CraftPad Light consists of the following parts:





## 6. Installation and connecting

1. Find the area on the flat surface, where you would like PEGAS CraftPad light to be set. Fix the stencil for holes drilling. Sizes are given on the stencil.
2. Drill the holes on the flat surface, where you intend to place the manifold, in accordance with the stencil provided (it is recommended to use drill bit of 10 mm (0,39") for drilling of the holes for pins and to use electric jig saw for rectangular hole cutting).
3. Connect the beer supply hoses and the CO2 hose to the inlet nipples of the manifold of CraftPad Light. Secure it with clamps.

Note: for connecting beer lines we recommend using PVC beer hoses with ID 7-9 mm (0.27 x 0.35")

4. Connect beer hose (which goes to the beer tap) to the outlet nipple of the manifold of CraftPad Light. Secure it with clamps.

Note: for connecting beer lines we recommend using PVC beer hoses with ID 7-9 mm (0.27 x 0.35")

5. Set PEGAS CraftPad on the flat surface with running of the hoses into the rectangular opening of the flat surface.
6. Screw the nuts to the pins; insert the pins into the holes of CraftPad Light.
7. Set the flat washers on the pins, secure it with nuts M8.
8. Connect beers to the six control switches of PEGAS CraftPad, and CO2 to the seventh one. Seventh switch is intended for purging beer channel, which would prevent from two different beers mixing while dispensing.

## 7. Beer dispensing

1. Turn on the manifold flow control switch with the beer that you want to dispense. Flow control switch is turned clockwise

**Not recommended: it is not recommended to have turned on at the same time two or more flow control switches, because at this time you might experience different beer brands mixing with each other.**

2. Proceed with beer dispensing through your beer tap in accordance with CraftTap operation manual.

3. Turn off the beer supply switch of the manifold at the time you finish dispensing. Before dispensing different type of beer, you should purge beer channel.

## 8. Beer channel purge

1. Insert a glass bottle into PEGAS CraftTap.

2. Turn on drainage channel of PEGAS CraftTap

3. Turn on CO2 supply switch on the manifold, then turn on beer supply on PEGAS CraftTap.

4. Whatever beer is left will be pushed out by the CO2 into a glass bottle.

5. Turn off CO2 supply switch on the manifold.

6. Turn of beer dispensing channel on PEGAS CraftTap.

## 9. Pegas CraftPad maintenance

Before operating the device you should read and learn present operation manual of CraftPad.

Device maintenance should be carried on in accordance with the program, shown below in the table. Maintenance can vary in accordance of type and level of device getting dirty.

If you are using PEGAS CraftPad for industrial beer dispensing or for dispensing of unfiltered beers, maintenance of some levels of cleaning and treatment should be done more often.

Type of Treatment*	Frequency	Solution for Treatment	Time, min
Line purging with CO <sub>2</sub>	Every time before dispensing different beers	CO <sub>2</sub>	Until beer will be completely pushed out of the beer channel
Disinfection	Once a week	Lerades C178 or similar solution used for beer lines disinfection	15
Rinsing with clean water	Once a week	Water at 20C (68F)	10

*\*present cleaning and maintenance programs was set by Russian Federation sanitary requirements. It is advised you check sanitary requirement in the country you intend to use the device.*

## 10. Warranty

Manufacturer provides 24 month warranty from that date of purchase and guarantees to repair all the device malfunctioning that might happen during this period due to manufacturers fault. Manufacturer is not responsible for device malfunctioning that is due to such reasons as lack of regular device washing and cleaning. Manufacturer regularly updates the PEGAS-products and has the right to change any characteristics and features of the device without debasing the quality, and without prior notice. These updates are stated by manufacturer in new versions of operation manuals.





**PEGAS<sup>®</sup>**

[www.beerinnovations.com](http://www.beerinnovations.com)